



# CUSTOM INSTALLER SERIES

UTF 10XL / UTF 12XL  
Mounting Instructions

## UTF 10XL / UTF 12XL Mounting Instructions

### Included Parts:

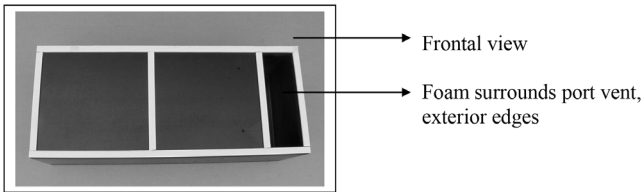
- ⇨ Ceiling Isolation Foam

### Tools required:

- ⇨ Screw shooter with long (6") Philips # 2 bit
- ⇨ ½" wrench
- ⇨ 7/16" socket, ½" socket
- ⇨ Ratchet bar

Isolation foam is supplied to optimize signal transfer and prevent vibration. Simply cut the foam to the desired length and press into place. When finished your UTF subwoofer should look as below with the 4 outside edges, inside port edge and enclosure midpoint covered in the foam.

\*\*\*Foam is to be used on the front (ported) side only. It is this side of the subwoofer that contacts the underside of the floor\*\*\*



## Standard Mounting

In most cases, simply drilling into the UTF side walls and adjacent ceiling rafters and installing (4) 5/16" x 2.5" long lag screws (not supplied) is sufficient; however, the additional rigidity, coupling and isolation achieved by the custom mounting kit system will further enhance the UTF's performance.

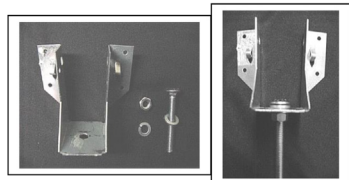
The custom mounting kit can be created by obtaining the following additional parts:

- ⇨ (4) vertical mounting brackets
- ⇨ (4) 3" L x 5/16-18 carriage bolts
- ⇨ (4) 3/8" lock washers
- ⇨ (16) 1" L # 6 sheet rock screws
- ⇨ (4) 5/16 -18 nuts
- ⇨ (4) 5/16 - 18 lock nuts
- ⇨ (8) 5/16" lock washers
- ⇨ (4) standard 5/16" washers
- ⇨ (2) pcs of perforated 24" long x 1.5" wide angle iron

## Custom Mounting Kit Instructions

### Step # 1

Assemble vertical mounting bracket. Place 3/8" lock washer over carriage bolt and push through bracket hole. Secure from the underside with 5/16" lock washer and 5/16" standard nut. Tighten securely.



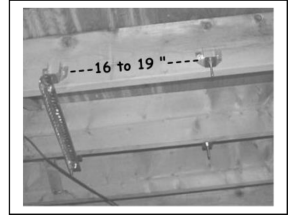
## Step # 2

After cutting the floor opening (approx 4" x 12") where desired, measure and mark beam for mounting vertical brackets as shown. Ideal spacing between brackets is 16" - 19". Be sure that bottom of bracket plate is about 1/2" above bottom beam edge.



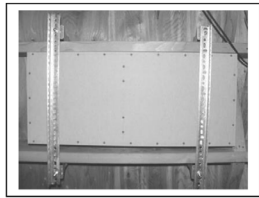
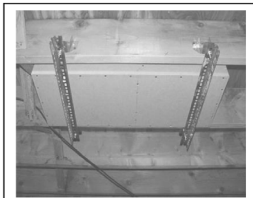
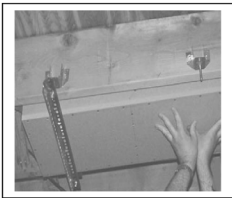
## Step # 3

Install vertical brackets using (4) #6 drywall screws. Note: Vertical brackets mount to the outside of the beam and are directly across from one another allowing for a clear span on the inside. Install across beams 1 pc of angle iron. Push onto the threads. Use (1) 5/16" washer, (1) 5/16" lock washer and (1) 5/16" lock nut per side. Do both sides. Thread securely.



## Step # 4

Slide the UTF subwoofer, foam side up, into place and install second angle iron as above. Tighten all 4 nuts progressively until the front side foam compresses about 1/8".



## Floor Vent Installation

### Step #1

Cut the opening in the floor to fit your desired floor vent grille.  
The floor opening must be at least as large as the size of the UTF port:

### Step #2

Port Opening Dimensions:  
UTF 10XL – 1.75" h x 11" l  
↳ UTF 12XL – 2" h x 12" l  
↔

### Step #3

- Secure the air intake plate to the floor.

## LIMITED WARRANTY UNDER THE FLOOR (“UTF”) SUBWOOFER SYSTEM

5-Years for Drivers, Cabinets, and Brackets, 2-years on amplifiers for any defects or performance issues realized during the product’s normal use, and 90 days for defects in manufacture or workmanship covering the exterior fit and finish for peeling and cracks.

JS Speaker Technology, LLC (herein “JS Speaker Technology”), warrants to the original retail purchaser only that products manufactured by JS Speaker Technology (the “Product”) will be free from defects in material and workmanship for a period of five (5) years covering drivers, cabinets and brackets, 2-years on amplifiers, and ninety (90) days covering the exterior fit and finish for peeling and cracks from the date of the original purchase from a JS Speaker Technology Authorized Dealer. If the Product is defective in material or workmanship, JS Speaker Technology or its Authorized Dealer will, at its option, repair or replace the warranted product at no additional charge, except as set forth below. All replaced parts and Product(s) become the property of JS Speaker Technology. The product that is repaired or replaced under this warranty will be returned to you, within a reasonable time, freight collect. This warranty is non-transferable and is automatically void if the original purchaser sells or otherwise transfers the Product to any other party. This Warranty does not include service or parts to repair damage caused by accident, misuse, abuse, negligence, inadequate packing or shipping procedures, commercial use, voltage in excess of the rated maximum of the unit, cosmetic appearance of cabinetry not directly attributable to defects in material or workmanship. This warranty does not cover the elimination of externally generated static or noise, or the correction of antenna problems or weak reception. This warranty does not cover labor costs or damage to the Product caused by installation or removal of the Product. JS Speaker Technology makes no warranty with respect to its products purchased from dealers or outlets other than JS Speaker Technology Authorized Dealer. The warranty is automatically void if: 1) The product has been damaged, altered in any way, mishandled during transportation, or tampered with. 2) The product is damaged due to accident, fire, flood, unreasonable use, misuse, abuse, customer applied cleaners, failure to observe manufacturers warnings, neglect or related events. 3) Repair or modification of the Product has not been made or authorized by JS Speaker Technology. 4) The product has been improperly installed or used. The product must be returned (insured and prepaid), together with the original dated proof of purchase to the Authorized Dealer from whom the Product was purchased, or to the nearest JS Speaker Technology factory service center. The product must be shipped in the original shipping container or its equivalent. JS Speaker Technology is not responsible or liable for loss or damage to the Product in transit. This limited warranty is the only express warranty that applies to your product. JS Speaker Technology neither assumes nor authorizes any person or entity to assume for it any other obligation or liability in connection with your product or this warranty. All other warranties, including but not limited to express, implied, warranty of merchantability or fitness for a particular purpose, are expressly excluded and disclaimed to the maximum extent allowed by law. All implied warranties on products are limited to the duration of this expressed warranty. JS Speaker Technology has no liability for acts of third parties. JS Speaker Technology’s liability, whether based on contract, tort, strict liability, or any other theory, shall not exceed the purchase price of the product for which a claim has been made. Under no circumstance will JS Speaker Technology bear any liability for incidental, consequential, or special damages. The consumer agrees and consents that all disputes between the consumer and JS Speaker Technology shall be resolved in accordance with Connecticut in Hartford County, Connecticut. JS Speaker Technology reserves the right to modify this warranty statement at any time. Some states do not allow the exclusion or limitation of consequential or incidental damages or implied warranties, so the above limitations may not apply to you. This warranty gives you specific legal rights, and you may also have other rights which vary from state to state.



[nextlevelacoustics.com](http://nextlevelacoustics.com)

tel + 617.237.2875

[info@nextlevelacoustics.com](mailto:info@nextlevelacoustics.com)